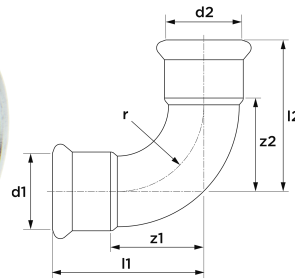


## VSH XPress Stainless bend 90° FF15

Image



Dimensions



11620

Type R2708

The VSH XPress SS12 is a stainless steel 90° elbow with 2 press ends. By using VSH XPress in your piping installation you can install in a quick, easy and clean way. VSH XPress provides a complete piping system suitable for every conceivable application.

- insert stop: stop edge for pipe end
- provided with all relevant approvals
- Leak Before Pressed-function
- clear identification on fitting of material and dimension

The VSH XPress R2708 is a stainless steel 90° elbow with 2 press ends. By using VSH XPress in your piping installation you can install in a quick, easy and clean way. VSH XPress provides a complete piping system suitable for every conceivable application.

- insert stop: stop edge for pipe end
- provided with all relevant approvals
- Leak Before Pressed-function
- clear identification on fitting of material and dimension

The VSH XPress R2708 is a stainless steel 90° elbow with 2 press ends. By using VSH XPress in your piping installation you can install in a quick, easy and clean way. VSH XPress provides a complete piping system suitable for every conceivable application.

- insert stop: stop edge for pipe end
- provided with all relevant approvals
- Leak Before Pressed-function
- clear identification on fitting of material and dimension

## PRODUCT FEATURES

Material connection 1	Stainless steel	Bend angle	90 Degrees
Material quality connection 1	Stainless steel 316 L (1.4404)	Bend radius	18 Millimetre
Surface protection connection 1	Untreated	Outer pipe diameter connection 1	15 Millimetre
Surface treatment connection 1	Untreated	Wall thickness, connection 1	1.5 Millimetre
Material connection 2	Stainless steel	Outer pipe diameter connection 2	15 Millimetre
Material quality connection 2	Stainless steel 316 L (1.4404)	Wall thickness, connection 2	1.5 Millimetre
Surface protection connection 2	Untreated	Length	53 Millimetre
Surface treatment connection 2	Untreated	Min. medium temperature (continuous)	-35 Degrees celsius
Shape	Bend	Length of connection 1	41 Millimetre
Model	1-part	Max. medium temperature (continuous)	135 Degrees celsius
Reducing	✘	Working length connection 1	21 Millimetre
Eccentric	✘	Length of connection 2	41 Millimetre
System specific	✔	Working length connection 2	21 Millimetre
Nominal diameter connection 1	DN 12	Medium temperature (continuous)	-35 135 Degrees celsius
Connection 1	Press sleeve	Max. operating pressure at 20 °C	16 Bar
Contour code connection 1	M		
Nominal diameter connection 2	DN 12		
Connection 2	Press sleeve		
Contour code	M		
Contour code connection 2	M		
Main colour fitting	Grey		
Flange compression class	PN 16		
Flange compression class (PN)	PN 16		

Material sealing	Ethylene-propylene diene monomer rubber (EPDM)
With buffer stud	✓
High tensile strength	✓
Gastec QA	✗
KIWA certified	✓
With thermal insulation	✗
With sealing rings/gaskets	✗
VdS quality mark	✗
Capped	✗
With connection indicator	✗
With drain valve	✗
With de-aerator	✗
FM quality mark	✗
LPCB quality mark	✗
ULC quality mark	✗
UL quality mark	✗
DIN-CERTCO certificate	✗
VdS quality mark	✗
With approval for TÜV	✗
DVGW quality mark for gas	✗
DVGW quality mark for water	✓
Certified according to NF 545	✗
KIWA certified	✓
Gastec QA mark	✗
KOMO certified	✗
Gastec QA - AR 214 (H2)	✗
Type approval according to BBR/EKS	✗