

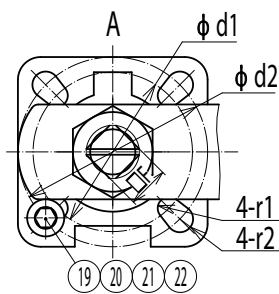
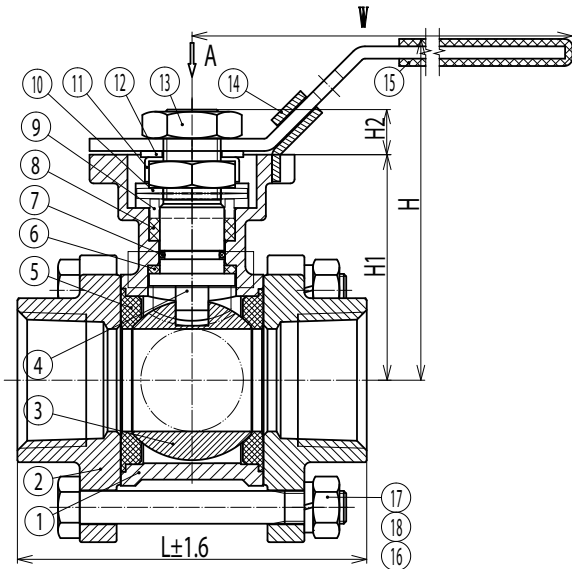
A86B Pegler 3 Piece Ball valve SS

(2 x threaded)



specifications

- stainless steel
- 3PC for flexible maintenance
- enhanced ball seat TFM4215
- includes ISO5211 mounting plate
- locking device as standard
- blow out proof stem
- working pressure PN63
- operating temperature -29°C to 204°C
- BS EN12266, API 598 low pressure test
- flow and return colour indicator



no.	component	material
1	body	Stainless Steel CF8M
2	body cap	Stainless Steel CF8M
3	ball	A182-F316
4	ball seat	TFM4215
5	stem	A182-F316
6	gasket	PTFE
7	oring	VITON
8	stem Packing	PTFE
9	packing Gland	SS 304
10	spring washer	SS 301
11	locking washer	SS 304
12	steel Washer	SS 304
13	nut	A2-70
14	handle	SS 304
15	hanel Cover	PVC
16	nut	A2-70
17	spring Washer	SS 301
18	bolt	A2-70
19	screws	A2-70
20	nut	A2-70
21	steel Washer	SS 304
22	locating Pin	SS 304

maximum pressure (bar)

dimension	test pressure shell	pressure seat
1/2" - 2" (63 bar)	104	6 (LP test)

pressure equipment directive category

all sizes SEP

dimension	code	weight (kg)	type	size	L	H1	H2	H	W	d1	d2	r1	r2	□F
DN15	123461890	0.6	Rp	1/2"	72	42	9	75	141	36	42	3	3	9
DN20	123461891	0.809	Rp	3/4"	80	48	9	81	141	36	42	3	3	9
DN25	123461892	1.252	Rp	1"	85	55	11	93	162	42	50	3	3.5	11
DN32	123461893	1.834	Rp	1 1/4"	105	60	11	98	162	42	50	3	3.5	11
DN40	123461994	2.748	Rp	1 1/2"	113	70	14	109	188	50	70	3.5	4.5	14
DN50	123462295	4.223	Rp	2"	132	85	14	124	188	50	70	3.5	4.5	14
DN15	123461902	0.6	NPT	1/2"	72	42	9	75	141	36	42	3	3	9
DN20	123461903	0.809	NPT	3/4"	80	48	9	81	141	36	42	3	3	9
DN25	123461904	1.252	NPT	1"	85	55	11	93	162	42	50	3	3.5	11
DN32	123461905	1.834	NPT	1 1/4"	105	60	11	98	162	42	50	3	3.5	11
DN40	123461906	2.748	NPT	1 1/2"	113	70	14	109	188	50	70	3.5	4.5	14
DN50	123462907	4.223	NPT	2"	132	85	14	124	188	50	70	3.5	4.5	14