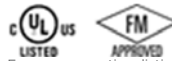


SS-7 STAINLESS STEEL RIGID COUPLING



For pressure rating, listing, and approval information, refer to data sheet or visit SHURJOINT website www.shurjoint.com for details or contact your SHURJOINT representatives.

The Model SS-7 Stainless Steel Rigid Coupling is the ideal coupling for use with Sch. 5S, Sch. 10S or Sch. 40S stainless steel pipe where a rigid connection is desired. The Model SS-7 features a tongue and groove mechanism and a heavy duty bolt pad design resulting in a positive rigid connection. The SS-7 has no built-in teeth that could harm light wall pipe or fittings. The SS-7 couplings are comprised of two identical CF8 (304) or CF8M (316) housing segments, EPDM gasket and stainless steel track bolts and heavy duty nuts.



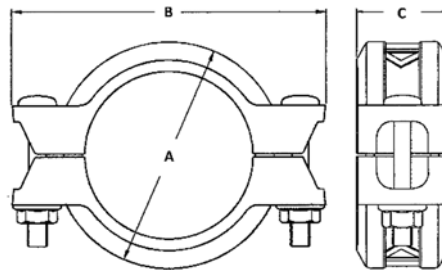
SS-7 couplings should always be installed so that the coupling bolt pads make metal to metal contact.



The tongue and groove style rigid coupling may allow for rotation of pipe when installed on deeper than specified grooves.

material specification

- **Housing:**
 - Type 304 Stainless steel to ASTM A351 CF8 or A743 Gr. CF8.
 - Other options: Type 316 to ASTM A743 CF8M
 - Type 316L to ASTM A743 CF3M
 - Type 316Ti to ASTM A240
 - Duplex 2205 to ASTM A890 4A.
 - Super Duplex 2507 to ASTM A890 5A.
 - Duplex 254SMO to ASTM A351 CK3McuN.
- **Rubber Gasket:**
 - Grade E-pw EPDM (Color code: Double Green stripe) certified under NSF/ANSI 61 and NSF/ANSI 372 for potable water service to +180°F (+82°C). Also good for services for water with acid, water with chlorine or chloramines, deionized water, seawater and waste water, dilute acids, oil-free air and many chemicals.
 - Not recommended for petroleum oils, minerals oils, solvents and aromatic hydrocarbons.
 - Other options: Grade "E" - EPDM
 - Grade "T" - Nitrile
 - Grade "O" - Fluoroelastomer.
 - Grade "L" - Silicone.
- For additional details contact Shurjoint.
- **Bolts & Nuts:**
 - Type 304 Stainless steel track bolts to A193 B-8 with heavy duty nuts to ASTM A194 B8, Molybdenum disulfide (MoS₂) coated.
 - Type 316 Stainless steel track bolts to A193 B-8M with heavy duty nuts to ASTM B8M, Molybdenum disulfide (MoS₂) coated.



Model SS-7 Stainless Steel Rigid Coupling

Normal Size	Pipe O.D.	Max. Working Pressure (CWP)*	Max. End Load (CWP)	Axial Displacement†	Dimensions			Bolt Size	Weight
					A	B	C		
in	in	psi	lbf	in	in	in	in	lbs	
mm	mm	bar	kN	mm	mm	mm	mm	kg	
1¼	1.660	750	1298	0-0.06	2.57	4.13	1.81	¾ x 2½	1.5
32	42.2	52	5.77	0-1.6	65.4	105	46		0.7
1½	1.900	750	1700	0-0.06	2.82	4.33	1.81	¾ x 2½	1.8
40	48.3	52	7.56	0-1.6	71.6	110	46		0.8
2	2.375	600	2657	0-0.06	3.30	5.00	1.89	¾ x 2½	2.0
50	60.3	42	11.82	0-1.6	83.8	127.1	48		0.9
2½	2.875	600	3893	0-0.06	3.82	5.50	1.89	¾ x 2½	1.8
65	73.0	42	17.32	0-1.6	97	139.7	48		0.8
76.1	3.000	600	4239	0-0.06	3.94	5.61	1.89	¾ x 2½	2.2
	76.1	42	18.86	0-1.6	100	142.5	48		1.0
3	3.500	600	5770	0-0.06	4.46	6.30	1.89	¾ x 2½	2.6
80	88.9	42	25.67	0-1.6	113.2	160	48		1.2
4	4.500	600	9538	0-0.13	5.65	8.15	2.06	½ x 3	4.6
100	114.3	42	42.43	0-3.2	143.6	207	52.4		2.1
139.7	5.500	600	14248	0-0.13	6.69	9.09	2.09	½ x 3	6.2
	139.7	42	63.38	0-3.2	169.8	231	53.2		2.8
5	5.563	600	14576	0-0.13	6.76	9.29	2.09	½ x 3	5.9
125	141.3	42	64.84	0-3.2	171.6	236	53.2		2.7
165.1	6.500	600	19900	0-0.13	7.70	10.04	2.22	½ x 3	6.8
	165.1	42	88.52	0-3.2	195.6	255	56.4		3.1
6	6.625	600	20672	0-0.13	7.83	10.08	2.22	½ x 3	6.8
150	168.3	42	91.96	0-3.2	198.8	256	56.4		3.1
8	8.625	600	35038	0-0.13	10.24	13.11	2.52	5/8 x 3½	14.1
200	219.1	42	155.86	0-3.2	260.2	333	64		6.4
200 JIS	8.516	600	34158	0-0.13	10.04	13.62	2.52	¾ x 4¾	13.2
	216.3	42	151.95	0-3.2	255	346	64		6.0

* The working pressure shown is based on roll-grooved Sch. 40S pipe. Pressure ratings for use on cut grooved stainless steel pipe and on thin wall stainless steel pipe can be found on Shurjoint publication [B-37](#).

† Allowable Axial Displacement figures are for roll grooved standard steel pipe. Values for cut grooved pipe will be double that of roll grooved. These values are maximums; for design and installation purposes these figures should be reduced by: 50% for ¾"/DN20 – 3½"/DN90; 25% for 4"/DN100 and larger to compensate for jobsite conditions.

General note

- Maximum Working Pressure (CWP) listed is the maximum cold water pressure for general piping services tested to ASTM F1476 and or AWWA C606 methods. Figures listed are based on roll- or cut-grooved standard wall carbon steel pipe. For other pipe schedules or pipe materials, contact Shurjoint for additional information.
- Max. End Load is calculated based on the maximum working pressure (CWP).
- Listed and or Approved Pressures are pressure ratings for fire protection systems, tested and approved by various approval bodies. Please always refer to the latest approval data posted on the Shurjoint website.
- Field Joint Test: For one time only, the system may be tested hydrostatically at 1½ times the maximum working pressure listed (AWWA C606 5.2.3).
- Warning: Piping systems must always be depressurized and drained before attempting disassembly and or removal of any components.
- The 10 Year Limited Warranty applies to manufacturing defects only and does not cover severe service/temperature applications or wear parts.
- Shurjoint reserves the right to change specifications, designs and or standard without notice and without incurring any obligations.

Aalberts integrated piping systems APAC Inc.

11F-2 No. 175 Zhongzheng 2nd Rd. / Lingya, Kaohsiung

Taiwan

www.aalberts.com/ips