

SS-1200 STAINLESS STEEL HIGH PRESSURE FLEXIBLE COUPLING



For pressure rating, listing, and approval information, refer to data sheet or visit SHURJOINT website www.shurjoint.com for details or contact your SHURJOINT representatives.

The Model SS-1200 is designed for high pressure applications including reverse osmosis, desalination and other specialty systems. The SS-1200 is available in strong and anti-corrosive alloys of Duplex CD3MN (2205), Super Duplex CE8MN, CE3MN (2507) and 6-Moly stainless steel CK3MCuN (254SMO*). The SS-1200 features 316 bolts, washers, and silicon bronze nuts to help prevent galling during repetitive use.

* 254SMO is a registered trademark of Avesta Polarit AB.

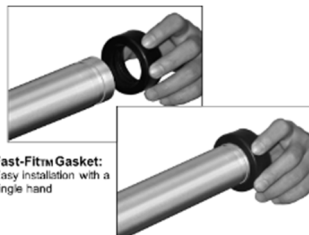


SS-1200 couplings should always be installed so that the coupling bolt pads make metal to metal contact.

The Shurjoint Fast-Fit™ gasket has been designed and engineered for easier and faster installations. The pipe-end friendly design eliminates struggling to stretch the gasket over the pipe ends and the Fast-Fit™ gasket also features Shurjoint's GapSeal technology, which seals the gap between the pipe ends and eliminates stagnant water pockets within the gasket cavity. The Fast-Fit™ gasket is UL classified in accordance with NSF/ANSI 61 and NSF/ANSI 372 for potable water (Cold Water +86°F / 30°C and Hot Water +180°F / +82°C).



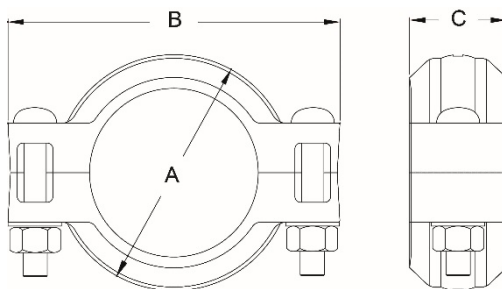
Always use the factory supplied Shurjoint Fast-Fit™ gasket. Performance standards do not support the use of a standard gasket in the SS-1200 coupling.



Fast-Fit™ Gasket:
Easy installation with a
single hand

material specification

- **Housing:**
 - Super duplex 2507 (CE3MN) to ASTM A890 Grade 5A
 - Duplex 2205 (CD3MN) to ASTM Grade 4A
 - Asthenic 254SMO (CK3MCuN) to A743
- **Rubber Gasket:**
 - Grade E-pw EPDM (Color code: Double Green stripe) certified under NSF/ANSI 61 and NSF/ANSI 372 for potable water service to +180°F (+82°C). Also good for services for water with acid, water with chlorine, deionized water, seawater and waste water, dilute acids, oil-free air and many chemicals.
 - Not recommended for petroleum oils, minerals oils, solvents and aromatic hydrocarbons.
 - Other options: Grade "E" - EPDM
- **Bolts:**
 - Type 316 stainless steel track bolts to ASTM A193 B-8M, Molybdenum disulfide (MoS₂) coated.
- **Nuts:**
 - Silicon bronze heavy duty nuts to ASTM B98 C65100
- **Washers:**
 - Type 316 stainless steel



Model SS-1200 Stainless Steel High Pressure Flexible Coupling

Nom. Size	Pipe O.D.	Max. Working Pressure (CWP)*	Max. End Load (CWP)	Axial Displacement†	Dimensions			Deflection Degree†	Bolt		Weight
					A	B	C		No.	Size	
in	in	psi	lbf	in	in	in	in	(°)		in	lbs
mm	mm	bar	kN	mm	mm	mm	mm				kg
1	1.315	1200	1630	0 - 0.06	2.36	3.90	1.81	2° - 45'	2	3/8 x 2 1/8	1.21
25	33.4	83	7.25	0 - 1.6	60	99	46				0.55
1 1/4	1.660	1200	2595	0 - 0.06	2.76	4.17	1.81	2° - 10'	2	3/8 x 2 1/8	1.39
32	42.2	83	11.55	0 - 1.6	70	106	46				0.63
1 1/2	1.900	1200	3400	0 - 0.06	2.99	4.45	1.81	1° - 54'	2	3/8 x 2 1/8	1.54
40	48.3	83	15.13	0 - 1.6	76	113	46				0.70
2	2.375	1200	5315	0 - 0.06	3.50	5.31	1.85	1° - 31'	2	1/2 x 3	2.29
50	60.3	83	23.64	0 - 1.6	89	135	47				1.04
76.1	3.000	1200	8470	0 - 0.06	4.01	6.04	1.91	1° - 15'	2	1/2 x 3	3.04
	76.1	83	38.19	0 - 1.6	102	153	49				1.38
3	3.500	1200	11540	0 - 0.06	4.69	6.61	1.85	1° - 02'	2	1/2 x 3	3.41
80	88.9	83	51.33	0 - 1.6	119	168	49				1.55
4	4.500	1200	19075	0 - 0.13	5.79	7.80	2.03	1° - 36'	2	5/8 x 3 1/2	4.69
100	114.3	83	84.86	0 - 3.2	147	198	52				2.13
6	6.625	1200	41346	0 - 0.13	7.95	10.71	2.05	1° - 05'	2	5/8 x 3 1/2	7.82
150	168.3	83	183.92	0 - 3.2	202	272	52				3.55
8	8.625	1200	68316	0 - 0.13	10.23	14.13	2.44	0° - 50'	2	7/8 x 5 1/8	15.55
200	219.1	83	303.88	0 - 3.2	260	359	62				7.06

* The working pressure shown is based on cut-grooved Sch. 40S or 80S pipe only.

† Allowable Axial Displacement and Angular Movement (deflection) figures are for roll grooved standard steel pipe. Values for cut grooved pipe will be double that of roll grooved. These values are maximums; for design and installation purposes these figures should be reduced by: 50% for 3/4"/DN20 - 3 1/2"/DN90; 25% for 4"/DN100 and larger to compensate for jobsite conditions.

General note

- Maximum Working Pressure (CWP) listed is the maximum cold water pressure for general piping services tested to ASTM F1476 and or AWWA C606 methods. Figures listed are based on roll- or cut-grooved standard wall carbon steel pipe. For other pipe schedules or pipe materials, contact Shurjoint for additional information.
- Max. End Load is calculated based on the maximum working pressure (CWP).
- Listed and or Approved Pressures are pressure ratings for fire protection systems, tested and approved by various approval bodies. Please always refer to the latest approval data posted on the Shurjoint website.
- Field Joint Test: For one time only, the system may be tested hydrostatically at 1 1/2 times the maximum working pressure listed (AWWA C606 5.2.3).
- Warning: Piping systems must always be depressurized and drained before attempting disassembly and or removal of any components.
- The 10 Year Limited Warranty applies to manufacturing defects only and does not cover severe service/temperature applications or wear parts.
- Shurjoint reserves the right to change specifications, designs and or standard without notice and without incurring any obligations.